

Revival

Deformation

Growing from shame to glory

Revival

Deformation

Growing from shame to glory

www.soencouragement.org/bethany

Let's Review

Terms

Action

Revival	Renewal Justification 📖
Reformation	Lost what you once had
Transformation	Living for Jesus
Deformation	Sanctification 📖
Compliance	Loving obedience
	Legalism
	Toxic Faith
	Blind Obedience

"Reviving and
defor  family"

www.southernmissionary.org/bethany

The Family

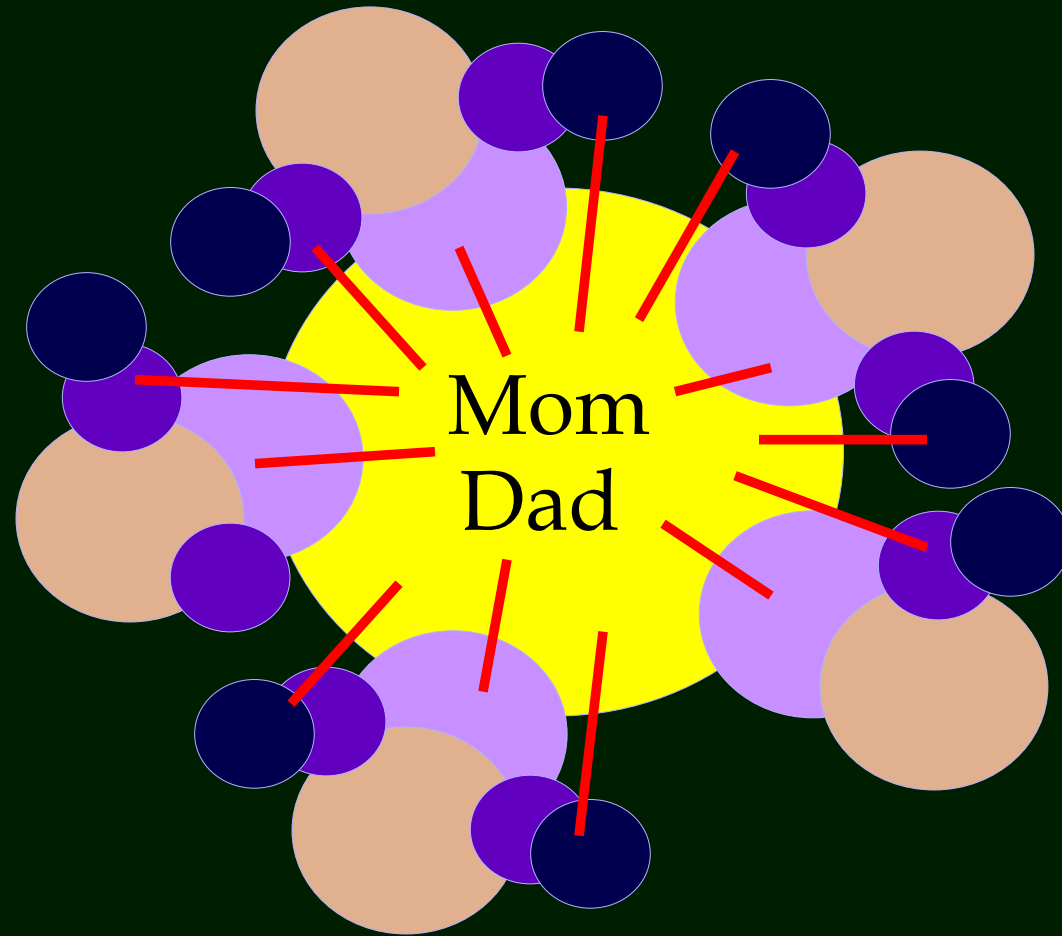


Types of Unions/Families in The Bahamas:

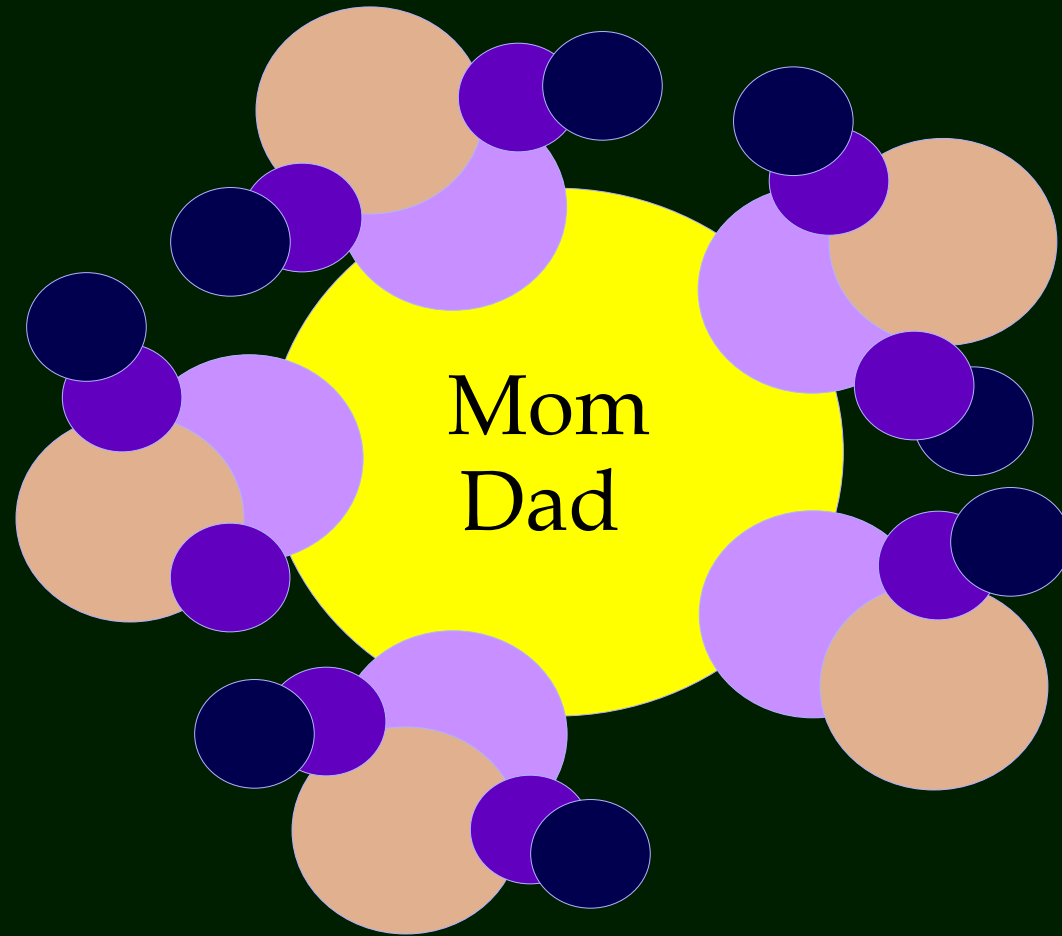
13 Family Types

1. Nuclear family
2. Common-law relationship
3. Seasonal (or nomadic) union
4. Emotionally separated or divorced union
5. Affair-compromised union
6. Permanently separated family
7. Step-family
8. Extended family
9. Foster family
10. Grandparent-parent family
11. Single-never married
12. Single-previously married
13. Same-sex union

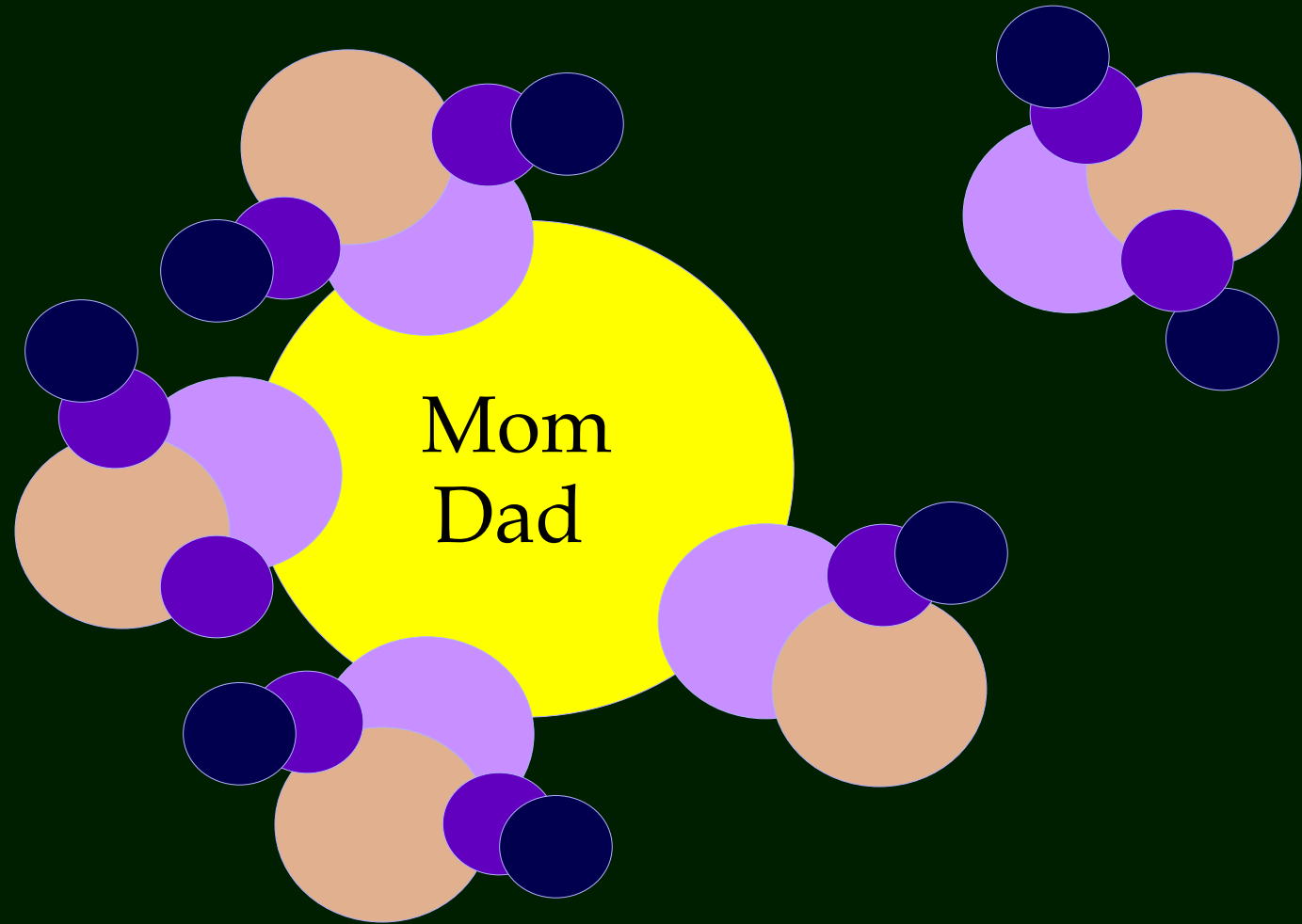
Problem with the Extended family



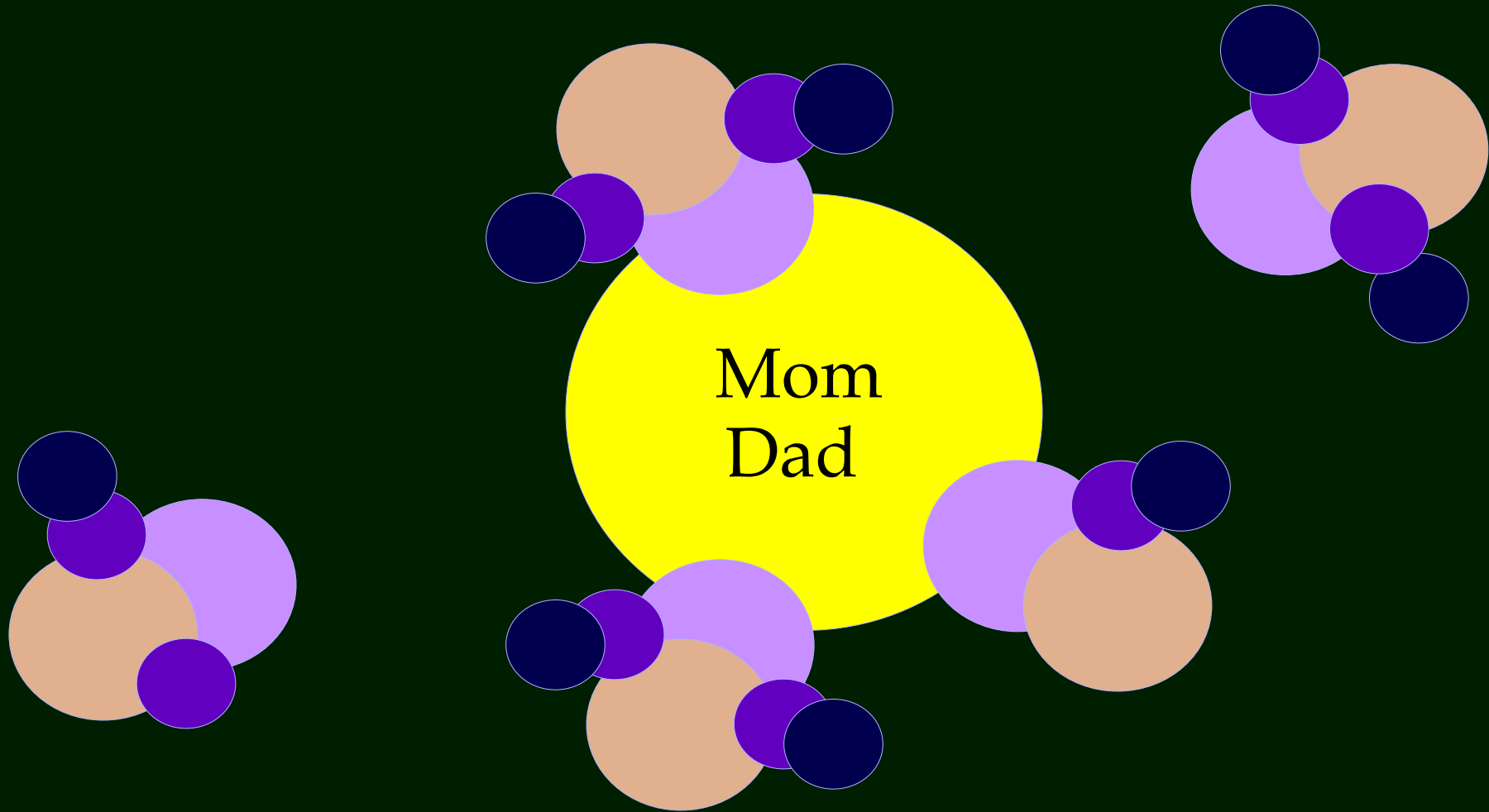
Problem with the Extended family



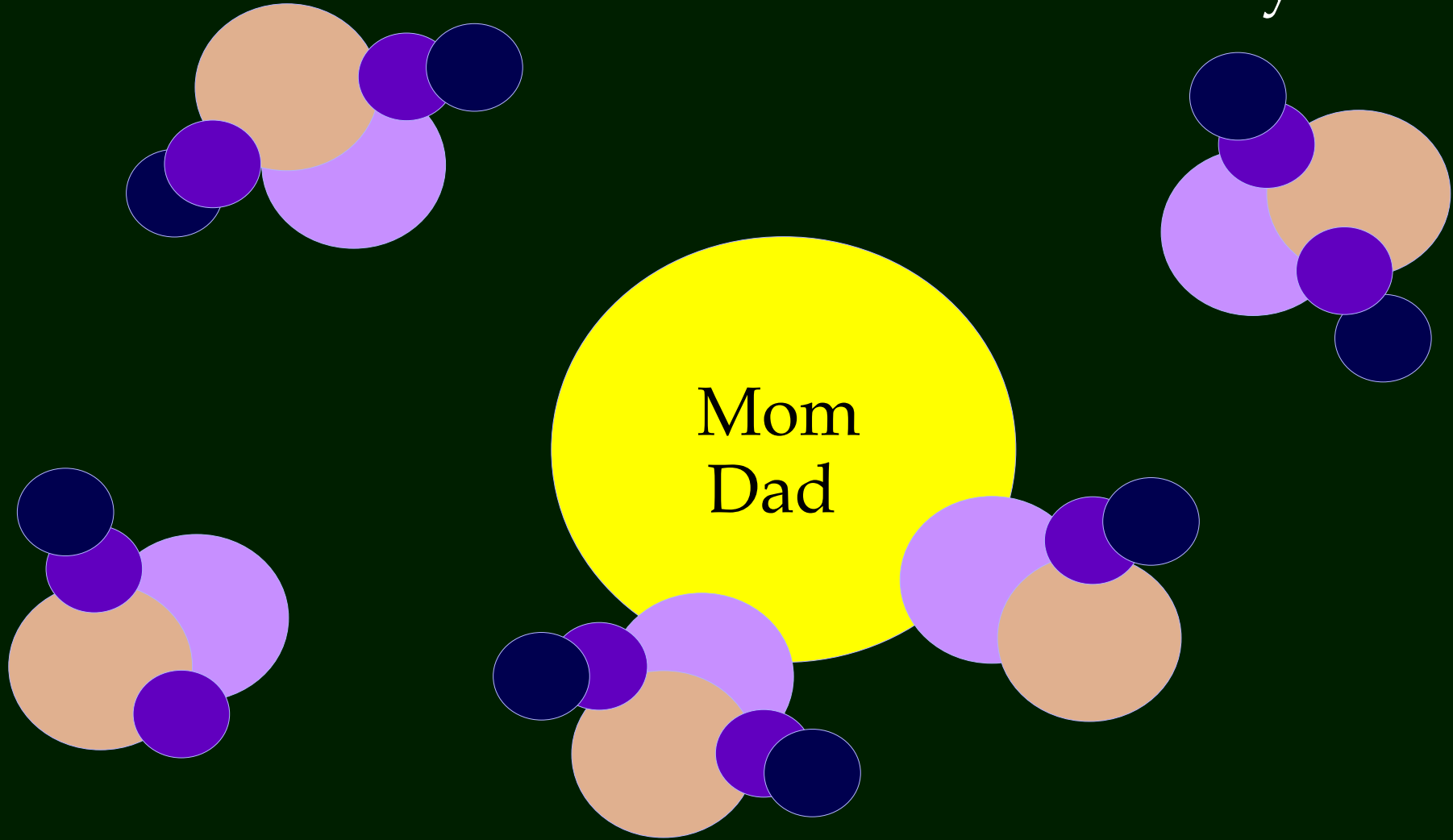
Problem with the Extended family



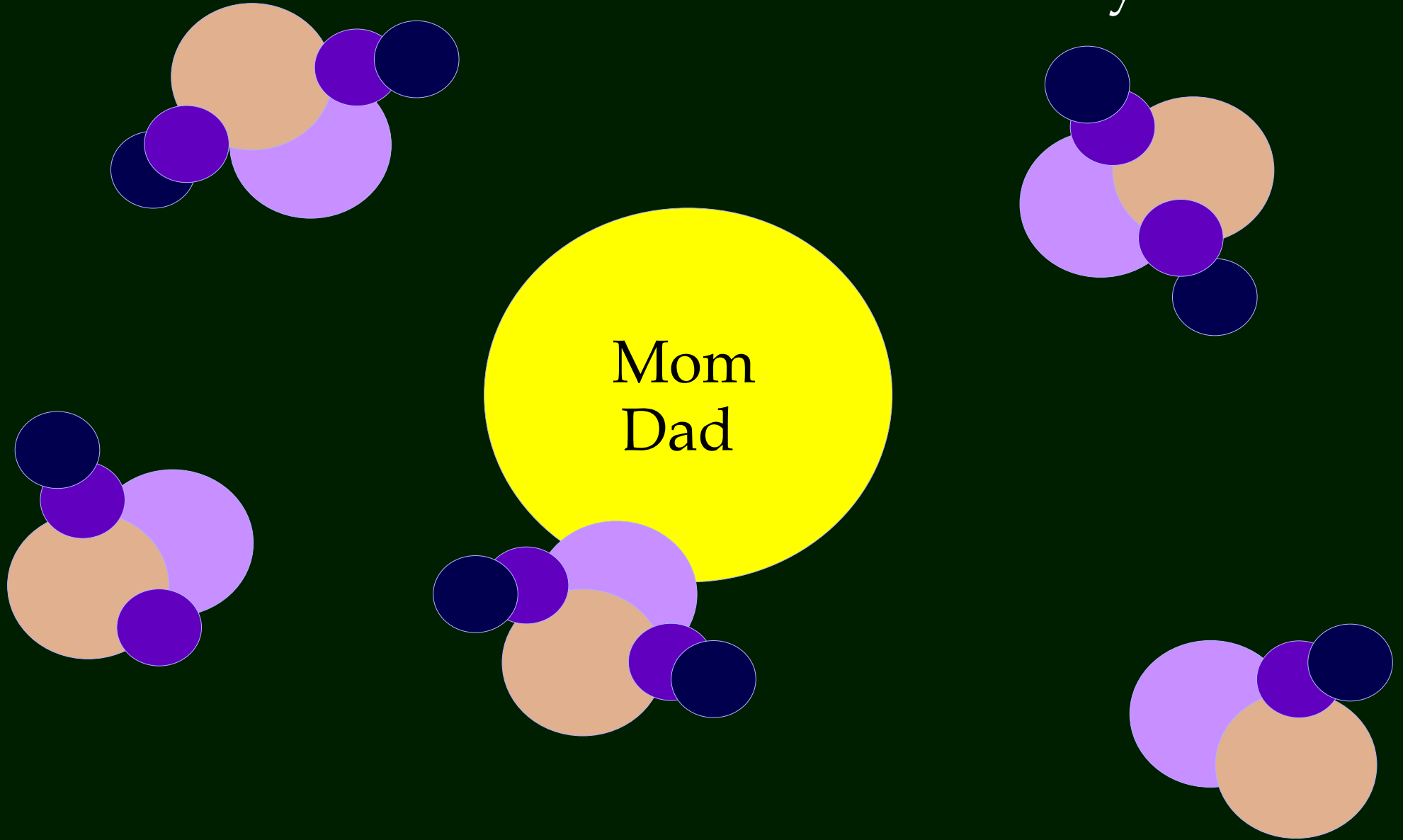
Problem with the Extended family



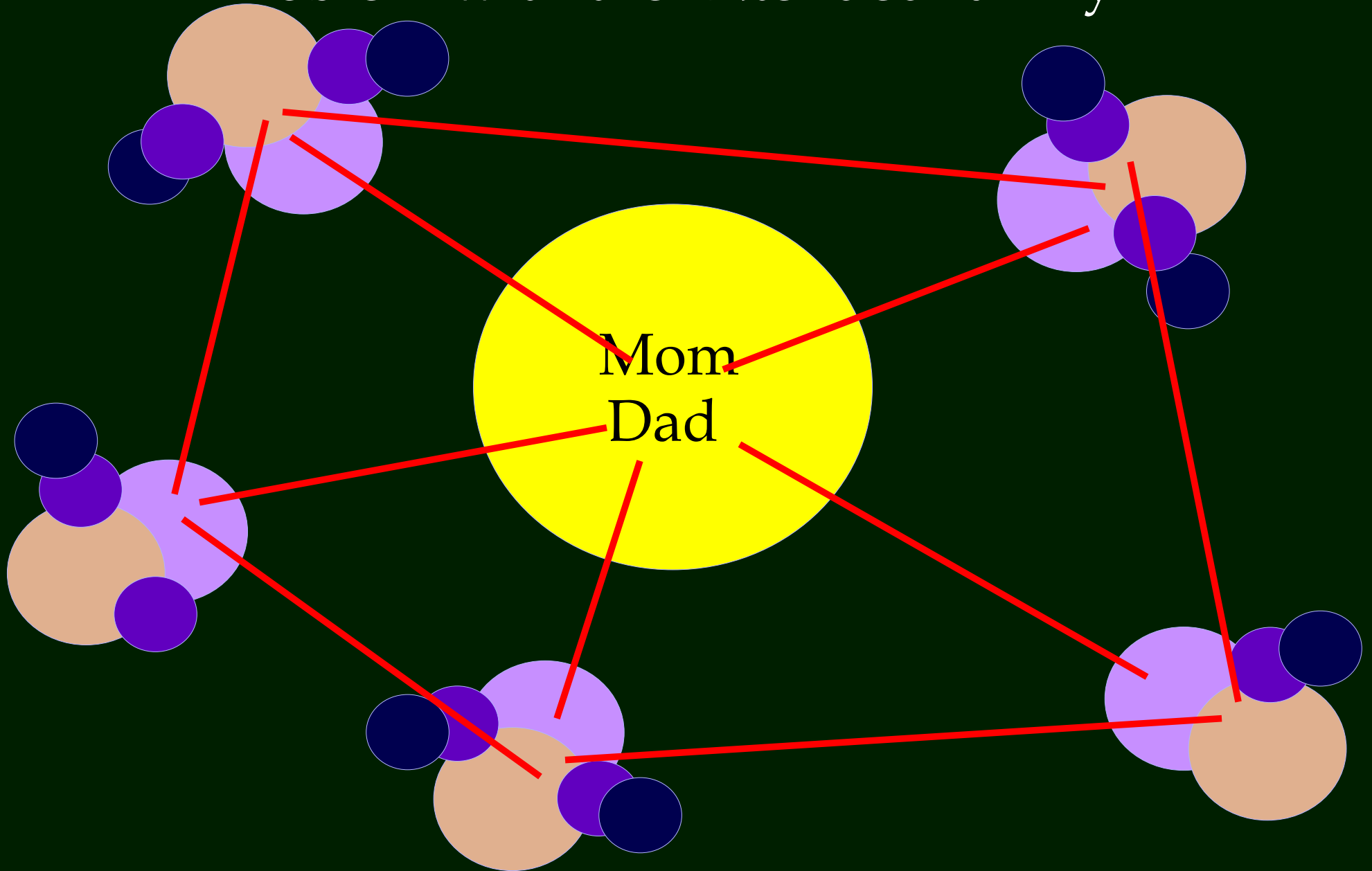
Problem with the Extended family



Problem with the Extended family



Problem with the Extended family

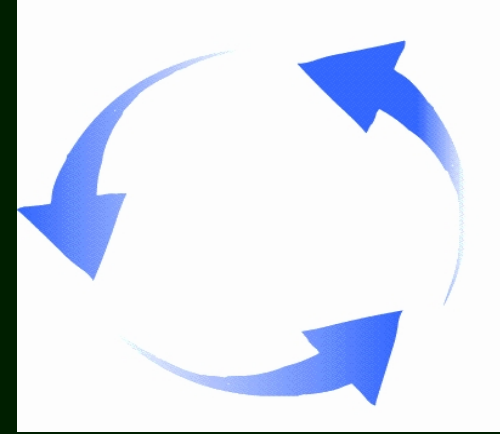


Deformed Families

How are families deformed?

When there is addiction in the family: drug, gambling, anger, alcohol, sex, food, etc

When there is spiritual abuse or the misuse of scripture to force or intimidate a family member to do something



Satan's Plan



Satan knows that painful childhood experiences or repeated disappointments and failures in our lives can cause us to pull away from God.

Broken Relationships

The Connection

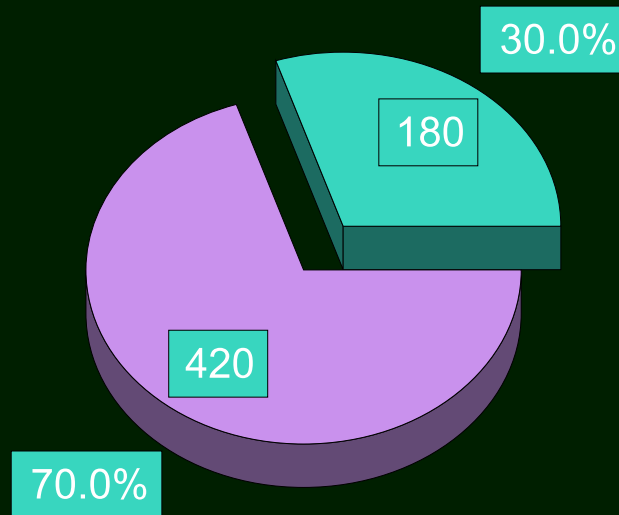
Broken or unhealthy relationships on earth usually destroy one's relationship with the Heavenly Father.

Why are Christians Abusive?

Barrington Brennen's Findings

When rigid traditional family practices are combined with rigid traditional religious beliefs,

there is **ALWAYS** abuse.



■ Christians ■ Non Christians

600 Abusive Men

180 (30%) said they were Christians.
The abusive behavior started or severely escalated after they became Christians.

Why?

It's because of this deadly formula.

Rigid Traditional family beliefs

+

Rigid religious beliefs

= Always Equal =

Abuse

**Violence
Against
Women and
Children**

Violence Against Women

All of this because the church teaches that the Bible says a woman must blindly submit to man.

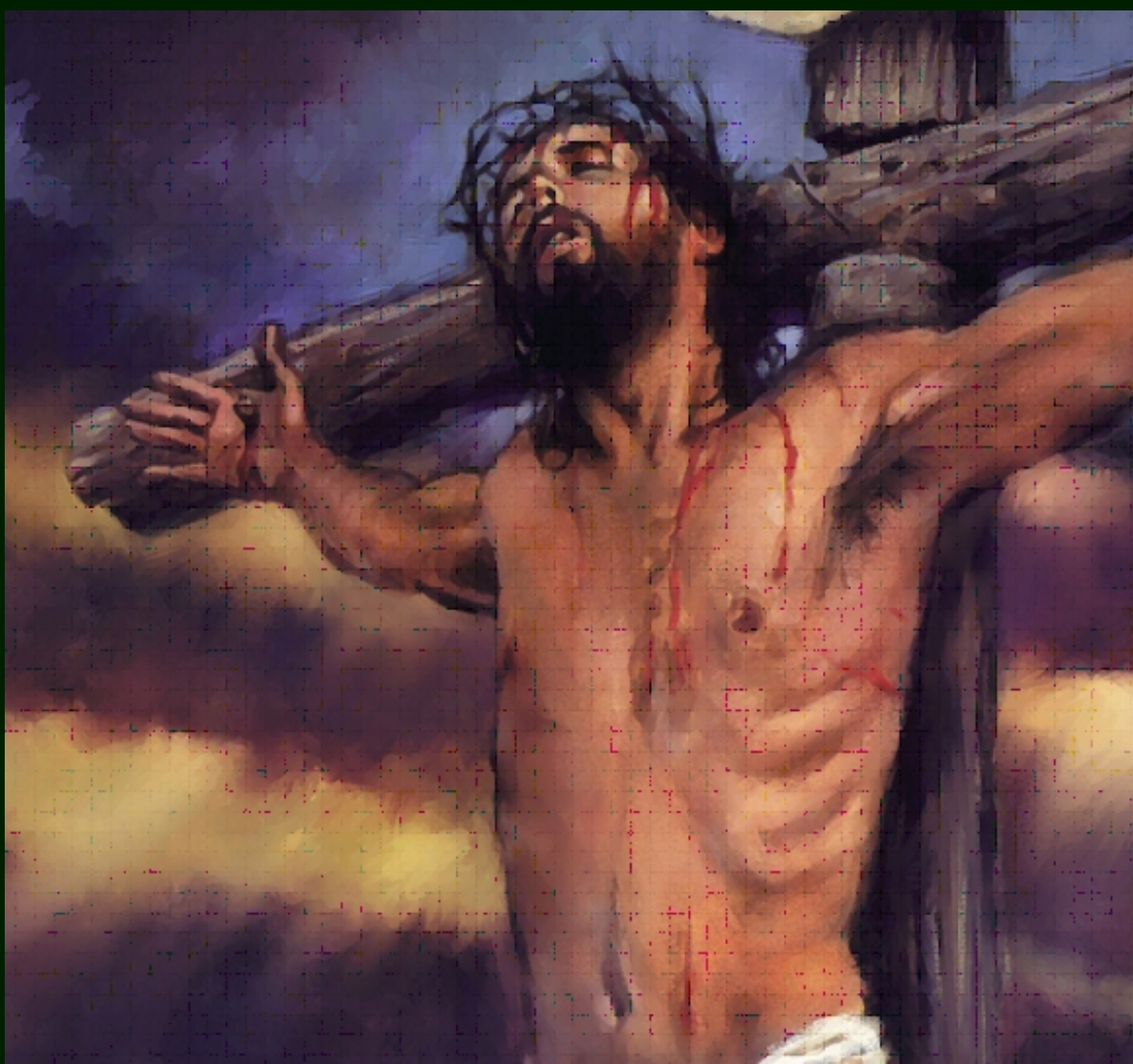
- Femicide
- Prenatal sex selection
- Female infanticide
- Economic abuse
- Political abuse
- Elder abuse
- Dowry-related violence
- Acid-throwing
- Sexual exploitation
- Sexual trafficking
- Female genital mutilation/cutting
- Sexual harassment
- Rape
- Crimes committed in the name of “honor”

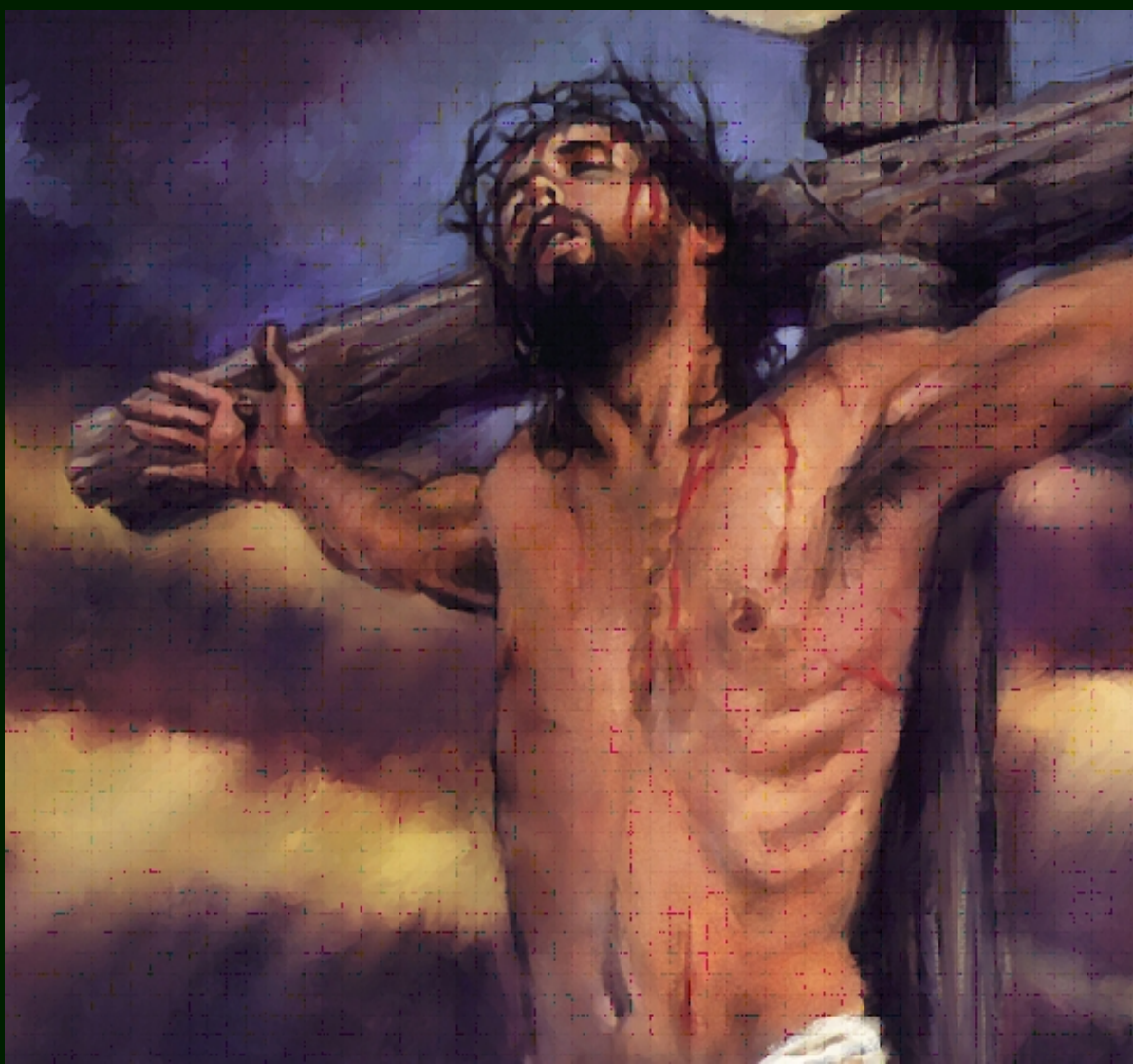
“The seeds of brokenness sown in our homes *and the church* by selfishness, alienation, neglect, and distrust have produced a harvest in a society of angry, broken lives.”





It's all about
JESUS
Our Salvation





Revive Us Again

We praise Thee, O God!
For the Son of Thy love,
For Jesus Who died,
And is now gone above.

Refrain:

Hallelujah! Thine the glory.

Hallelujah! Amen.

Hallelujah! Thine the glory.

Revive us again.

All glory and praise
To the God of all grace,
Who hast brought us, and
sought us,
And guided our ways.

Refrain:

Hallelujah! Thine the glory.

Hallelujah! Amen.

Hallelujah! Thine the glory.

Revive us again.

